

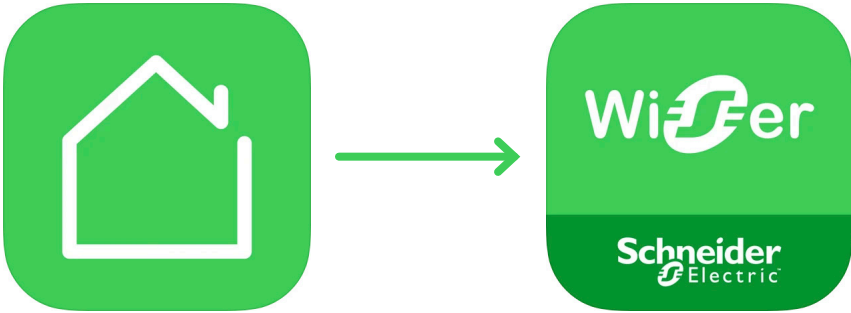


Step-by-step guide

How to prepare your devices
for the Wiser by SE app

Life Is 

 **CLIPSAL**[®]
by Schneider Electric



This user guide will help you to prepare your devices for the **new Wiser by SE app**, which has many more functions and possibilities than your **Wiser Room app**.

1

2

3

4

5

6

7



Step 1

Go into the app store and check for updates on the Wiser Room app. Run update if required.

1

2

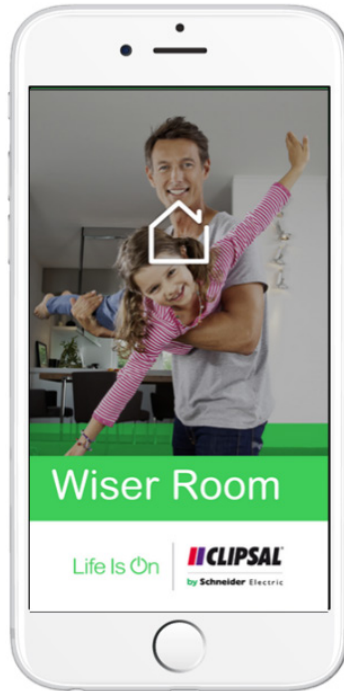
3

4

5

6

7



Step 2

Open the Wiser Room app.

1

2

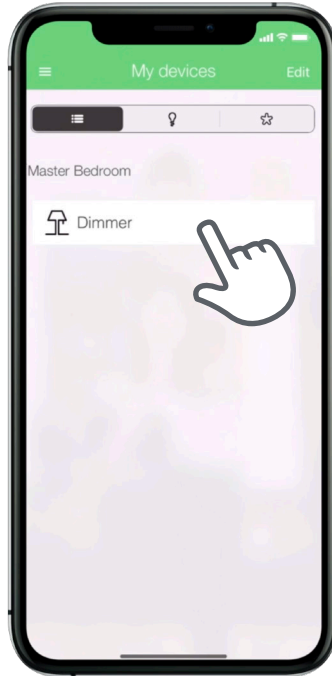
3

4

5

6

7



Step 3

Make sure you are within 8–10 metres and in the same room of the device you intend to update first. Tap on the device at the top of the list.

1

2

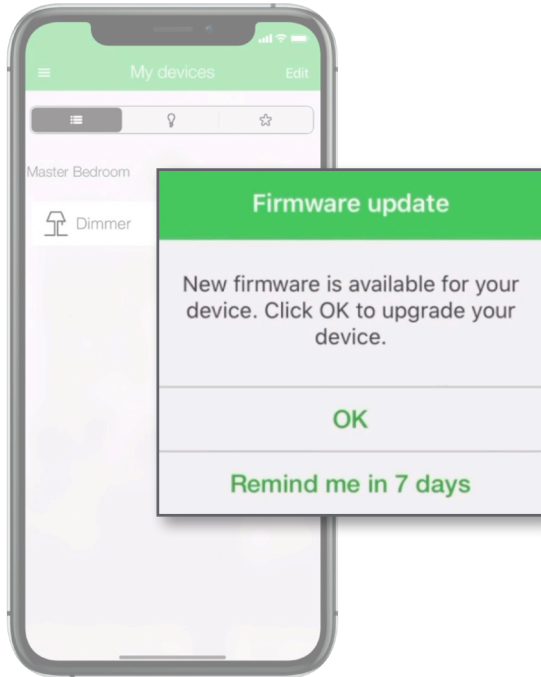
3

4

5

6

7



Step 4

If the device requires an update, you will see the 'Firmware update' pop-up on your screen. (If a pop-up does not appear on your screen, your device does not require an update and is ready for use with the new Wiser by SE app.)

1

2

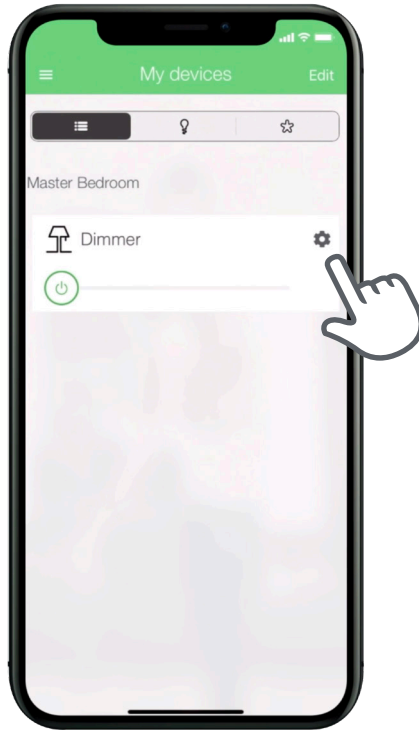
3

4

5

6

7



Step 4

Tap 'OK,' then tap on 'Settings' (⚙️).

1

2

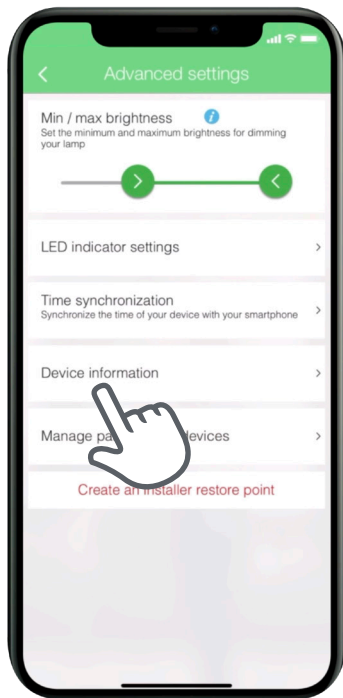
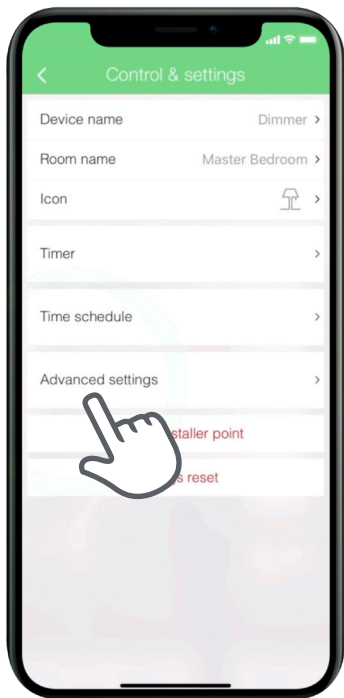
3

4

5

6

7



Step 4

From the Settings page, tap 'Advanced settings,' then tap 'Device information.'

1

2

3

4

5

6

7



Step 4

At the bottom of the screen, tap the button 'Firmware update needed.'

1

2

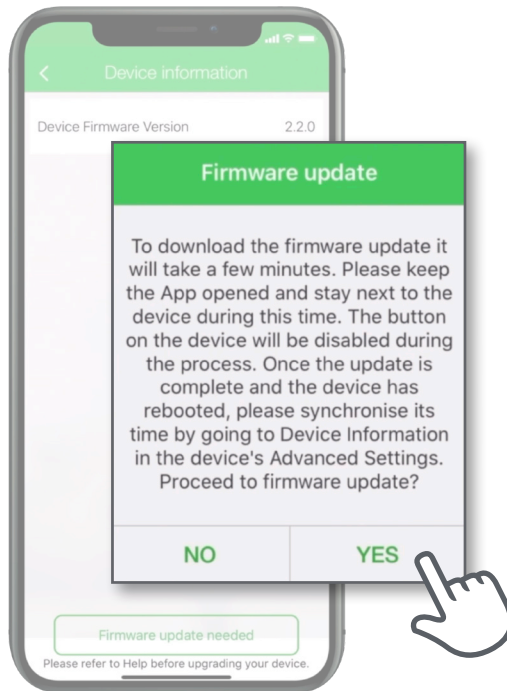
3

4

5

6

7



Step 4

The 'Firmware update' pop-up will appear on your screen and ask you if you wish to proceed. Tap 'YES' and ensure to keep your phone within range of the connected switch or socket.

1

2

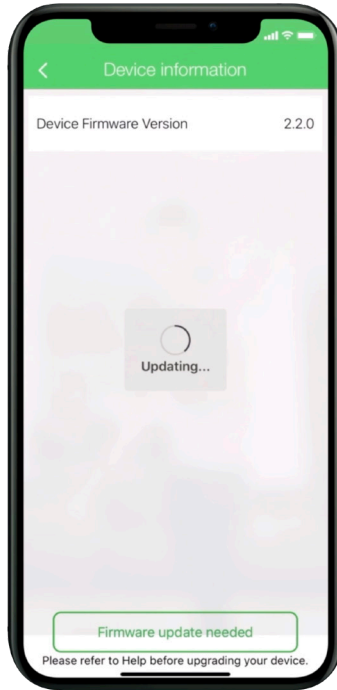
3

4

5

6

7



Step 4

The update will take approximately 3–4 minutes. All of your previous device settings will be saved back into the device.

1

2

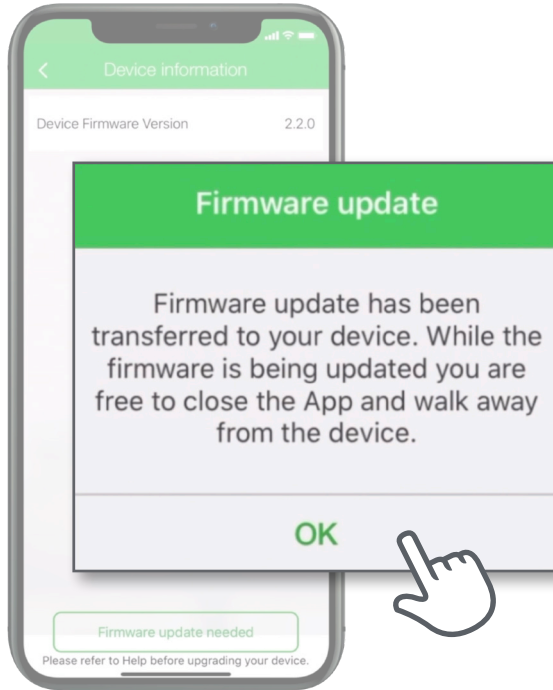
3

4

5

6

7



Step 5

Once the update has finished, you will see a confirmation message pop-up. Tap 'OK' and you're done. Your update for the chosen device has now been completed. It is now ready to be used in the Wiser by SE app.

1

2

3

4

5

6

7



Step 6

Repeat the process for all the Bluetooth connected devices which require an update.

1

2

3

4

5

6

7



Step 7

Once all your devices are updated, you are now ready to download and start using the Wisper by SE app.

Thank you!

Life Is On

